



Pulteney Road, London, E18

BUTLER & STAG



Situated in the heart of popular South Woodford is this fantastic four bedroom Victorian semi detached family home.



Freehold

- Semi Detached Family Home
- Four Bedrooms/Two Bathrooms
- Stunning Throughout
- Two Receptions/Utility Room
- Downstairs WC
- West Facing 65' Rear Garden

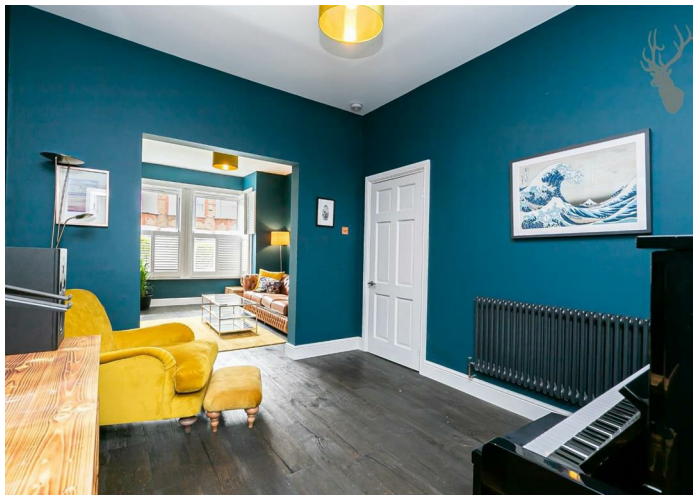
Artfully blending period features with modern touches, the house has been extensively remodelled by the current occupiers and consists of a two reception rooms complete with original floor boards both offering flexible living space. To the rear the kitchen/dining room has been sympathetically extended and finished to an excellent standard. There is also a WC set off the hallway along with a separate utility room.

Upstairs the first floor hosts three generous bedrooms which are all wonderfully bright as well as a modern family bathroom.

The loft has been converted and is spacious bedroom with en-suite and built in wardrobes.

Externally, the rear garden is substantial extending close to 65ft and is mainly laid to lawn perfect for those summer evenings.

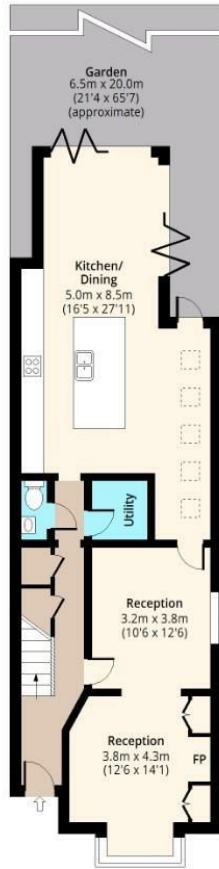
The location is superb just South of George Lane which offers a vibrant mix of shopping, social and transport amenities including Marks & Spencer's and Waitrose along with the Central Line station offering swift access into the City, Docklands, West End and beyond.





Pulteney Road

Ground Floor
Approx. 83.33 Sq. meters (897 Sq. feet)



First Floor
Approx. 63.26 Sq. meters (681 Sq. feet)



Second Floor
Approx. 31.40 Sq. meters (338 Sq. feet)



Total area: approx. 178.00 Sq. meters (1916 Sq. feet)
For illustration purposes only - not to scale
www.lpaplus.com



BUTLER & STAG

☎ 01992 667666

🏠 4 Forest Drive, Theydon Bois, Essex, CM16 7EY

✉ theydon@butlerandstag.com

www.butlerandstag.uk

IMPORTANT NOTICE - These particulars have been prepared in good faith and they are not intended to constitute part of an offer or contract. We have not performed a structural survey on this property and the services, appliances and specific fittings have not been tested. All photographs, measurements, floor plans and distances referred to are given as a guide and should not be relied upon.